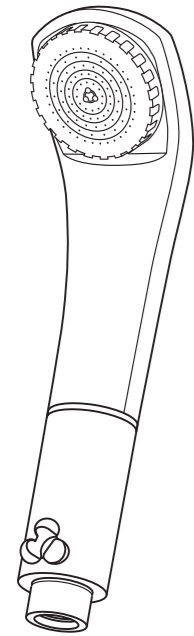


Microbubble Shower Head
Purebble II User Manual

Pb
Purebble II

Purebble II is the ultimate shower head that uses a unique advanced patented technology to create microbubbles. Ideal for skin and haircare, Purebble II is bliss in the shower.



Thank you for choosing Purebble II;
Microbubble Shower Head.
Please read this manual carefully for
safe use of this product.



Introduction

This user manual shows how to mount and care for the product. Please read this carefully before using to get the most out of this product. Please keep this on hand for reference as necessary.

Precautions

- 1 Check water temperature before using the shower to avoid being scalded by hot water.
- 2 If you are using an instantaneous gas water heater, the water temperature may change during your shower.
- 3 Keep the water temperature below 60. Higher temperatures will cause damage, distortion, or discoloration of the product.
- 4 This product is made of plastic. Take care not to over tighten screws when mounting.
- 5 Do not use for other liquids such as solvents or chemicals.
- 6 Do not use product for anything other than showering.
- 7 Use a soft cloth to clean the product. Brushes may damage the product.
- 8 Water remaining in the shower head will drain from the air inlet when you stop the shower.
- 9 If the water pressure is too high, reduce the water volume.
- 10 When you remove the jet panel, use a soft cloth such as a towel to prevent slipping.

Warning

If the water pressure of your shower is high, the shower head may pop out of the shower mounting holder when you start the shower. In such case, be sure to hold the shower head by hand or make sure it is firmly set in the mounting holder before turning on the shower faucet.

Product name: Microbubble Shower Head, Purebble II

Materials

- Body: ABS resin
- Hose: Stainless steel
- Mount Holder: ABS resin
- O-ring: Silicone

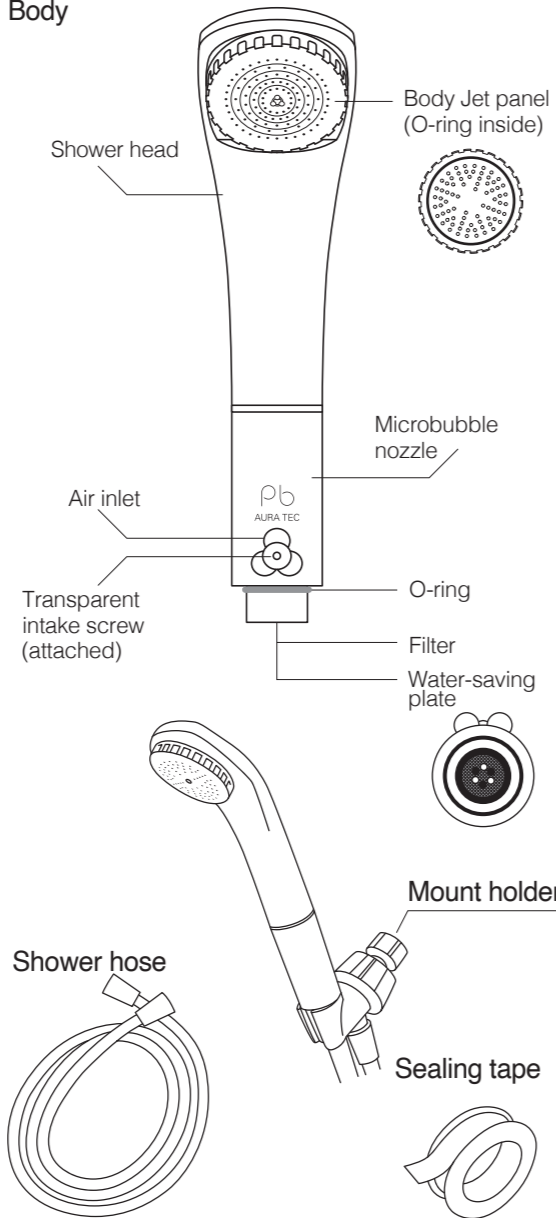
Highest temperature for use: 60°C
Minimum water pressure: 0.035Mpa
Minimum water amount: 6.5L/min
Maximum service temperature: 60°C

Made in Japan

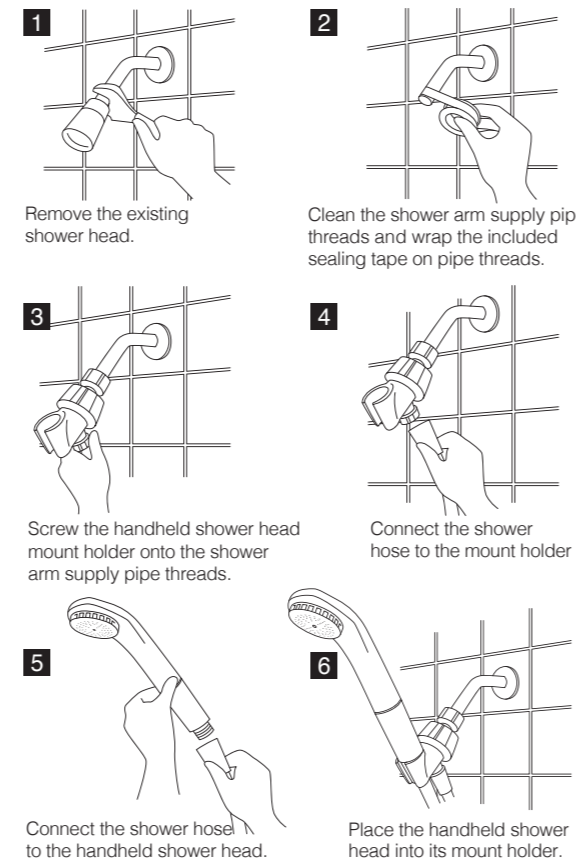
Part Names

Prior to installing, confirm that you have all the parts listed below. If there are any missing or different parts, please contact the store where you purchased the product.

Body



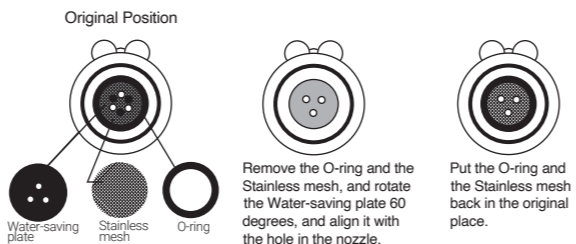
Installation Guide



Attention!

Purebble II is designed in compliance with U.S. water-saving standards, however, depending on the environment in which you use it, you may feel insufficient water flow.

In this case, you can increase the water flow by about 10% by adjusting the position of the water-saving plate as described below. Please note that adjustment and removal of the water-saving plate is at your own discretion.

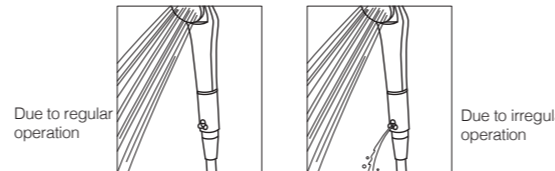


Care

Regularly maintain Purebble II for long term use.

Maintenance may be required:

If you do not see air bubbles when placing the shower head under water. If water leaks from the air inlet.



※ Water remaining in the shower head will drain from the air inlet when you stop the shower.

Hard Water Buildup

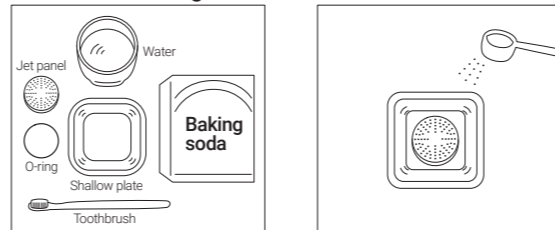
The above issues may be caused by lime clogging the filter inside the screw joint between the showerhead and hose. Please clean the filter using the methods below.

* Please take care not to lose any parts when you are cleaning.

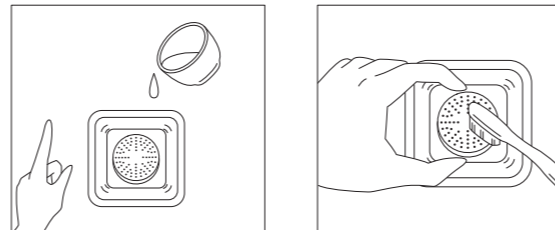
If the jet panel is clogged:

If it appears that the Jet Panel is clogged, we recommend following the cleaning methods below.

1. Clean with baking soda

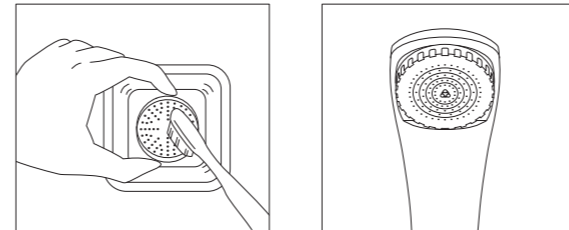


① Prepare items
※ Remove attached O-ring in advance



③ Add a small amount of water on and work it into the tiny holes in the jet panel.

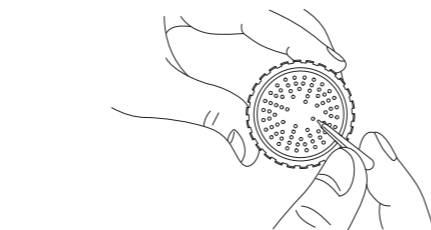
④ Leave to sit for about 30 mins. Use the edge of a toothbrush to scrub the tiny holes on both sides.
Continue to the next page ➤



⑤ Rinse well with water and reattach to shower head.
If clogging persists, you may need to repeat the process a few times.

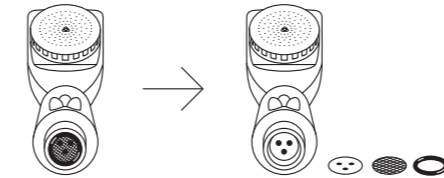
If there is no improvement after trying the above, use a toothpick to clean the holes carefully from the back side, as not to damage them.

See the illustration image.



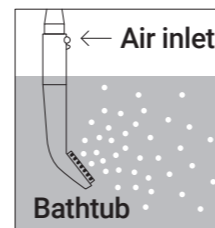
Blockage in the filter:

If sand or any other foreign substance sticks to the filter, the water flow may be reduced. In this case, remove the O-ring that fixes the filter and then remove any blockages from the filter.



When Filling the Bathtub

When you fill the bathtub with Purebble II for a micro bubble bath, please keep the air inlet out of the water. If the air inlet is covered by water, the shower head will not be able to produce microbubbles.



Troubleshooting Clogs:

- There may be some blockage in the screw hole in the air inlet. Remove the screw from the air inlet using a screwdriver and clean the hole.
 - * The screw is plastic. Avoid applying too much force when you are screwing in the air inlet. If it is overtightened, it may break.
 - * Reinsert the screw after cleaning or the air inlet will not operate.
- There may be a blockage inside the air inlet. Cover the jet panel with your palm while running the shower, and the blockage should be forced out of the air inlet.
 - * There may be a blockage inside the air inlet if water does not come out from the air inlet when you stop the shower.
- The water flow rate or pressure may be low. Please refer to page 3 for the water flow and pressure requirements.
- If you cannot determine the cause of an issue, please refer to "Guarantee and After-Purchase Services" at the end of this manual or directly contact the shop where you purchased the product.

Frequently asked questions

Q1 Why does water come out of the air inlet when I stop showering?

A. There is no need for concern. When you stop showering, Purebble II drains any remaining water from the air inlet. Draining also cleans the air inlet.

Q2 How do I know microbubbles are being generated?

A. When you turn on the shower underwater, you will be able to see bubbles. However, the bubbles should not cloud the water. As the microbubbles are formed, you will also hear the air inlet taking in air.

Q3 Why does water come out of the air inlet when I'm showering?

A. This issue could be caused by either of following reasons:
A foreign substance may have gotten in the inlet, lowering the water flow rate and pressure. Alternatively, lime build up could have clogged the shower jet nozzle. Please refer to page 4.

Guarantee and After-Purchase

STANDARD ONE YEAR MANUFACTURER WARRANTY:

The manufacturer warrants this product to be free from defects in workmanship and materials, under normal residential use and conditions, for a period of one (1) year for the original invoice date. Shipping and handling fees are to be paid for by the customer. The manufacturer agrees, at its option during the warranty period, to repair any defect in material or workmanship or to furnish a repaired or refurbished product of equal value in exchange without charge (except for a fee for shipping, handling, packing, return postage, and insurance which will be incurred by the customer). Such repair or replacement is subject to verification of the defect or malfunction and proof of purchase as confirmed by showing the model number on original dated sales receipt.

WARRANTY LIMITATIONS

This warranty does not include:

- Any condition resulting from other-than-ordinary residential wear or any use for which the product was not intended, such as use in rental or contract trade or commercial use;
- Any condition resulting from incorrect or inadequate maintenance or care;
- Damage resulting from misuse, abuse, negligence, accidents or shipping damage;
- Dissatisfaction due to buyer's remorse;
- Normal wear and tear;
- Damages incurred during transportation;
- Damages incurred during assembly or maintenance;
- Any used, previously- displayed items.

All warranty claims must be filed by the consumer to the retailer of this product, who in turn is to contact the manufacturer regarding any warranty return or replacement. We will not handle claims from the consumer directly. Please retain invoices for a minimum of one year for warranty purposes.

CLAIM PROCEDURES:

- Claims for defective merchandise must be made within ONE year from invoice date. Claims for missing parts must be made within 60 calendar days after the merchandise is received.
- Any claim for defective merchandise returns must be packed in original packaging.
- We reserve the right to specify that items be returned to the original warehouse for inspection or be inspected by our representative in the field.
- Pictures are required to claim defective merchandise, along with a copy of the original invoice.
- If the claim is justified, the item(s) or part(s) will be repaired or replaced or a credit will be issued.
It is our policy to replace parts whenever possible.

Manufacturer |

AURA TEC Inc.
1233-1, Mizuta, Chikugo-shi, Fukuoka,
830-0027
Tel: +81-942-53-2504, Fax: +81-942-53-2811
www.purebble.com
MADE IN JAPAN